



SUGIYAMA ELECTRIC SYSTEM INC.

611Man-cho Nakagawa-ku Nagoya Aichi 454-0872 Japan
 TEL. 81-52-363-0501
 FAX. 81-52-351-7585

Light sensor
 LS-102/102M

LS-102 and LS-102M are retro-reflective photo sensors having 100 mm detective height.

These photo sensors can detect passage of the target.

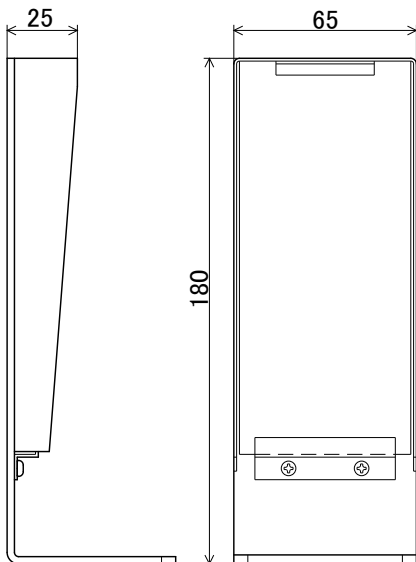
LS-102 is fixed on the flat bar.

LS-102M is fixed on the magnetic base.

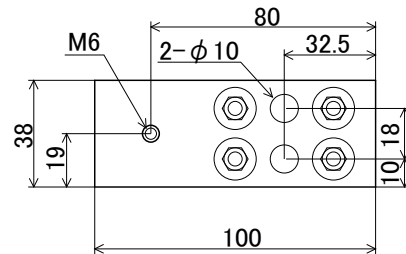
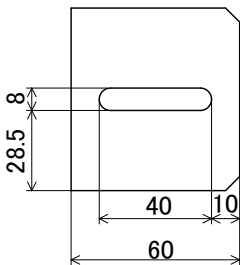
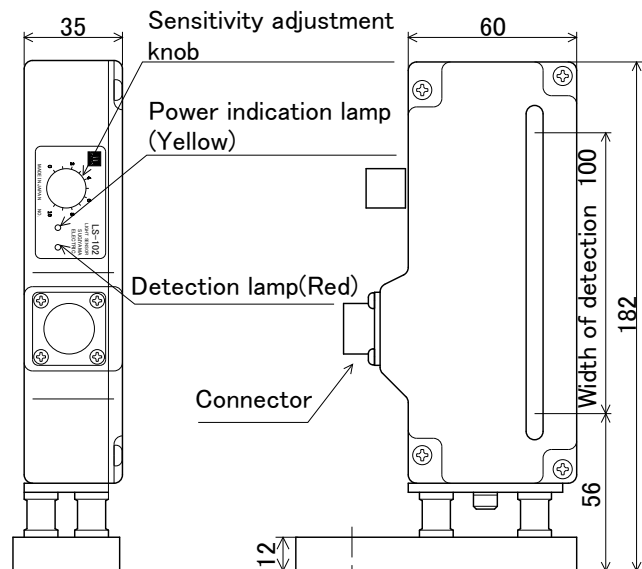
The photo transmitter and receiver units and reflector are separated.

Standard sensing object	Opaque, 3 mm dia. min.
Input configuration of Malfunction detector	NC
Power source	DC12 V +/-5% 150 mA (max)
Output	NPN output of +12 V with Approx. 2.2 kΩ pull-up resistor.
Load current	50 mA (max)
Ambient temperature range	0 ~ 40°C

Reflector

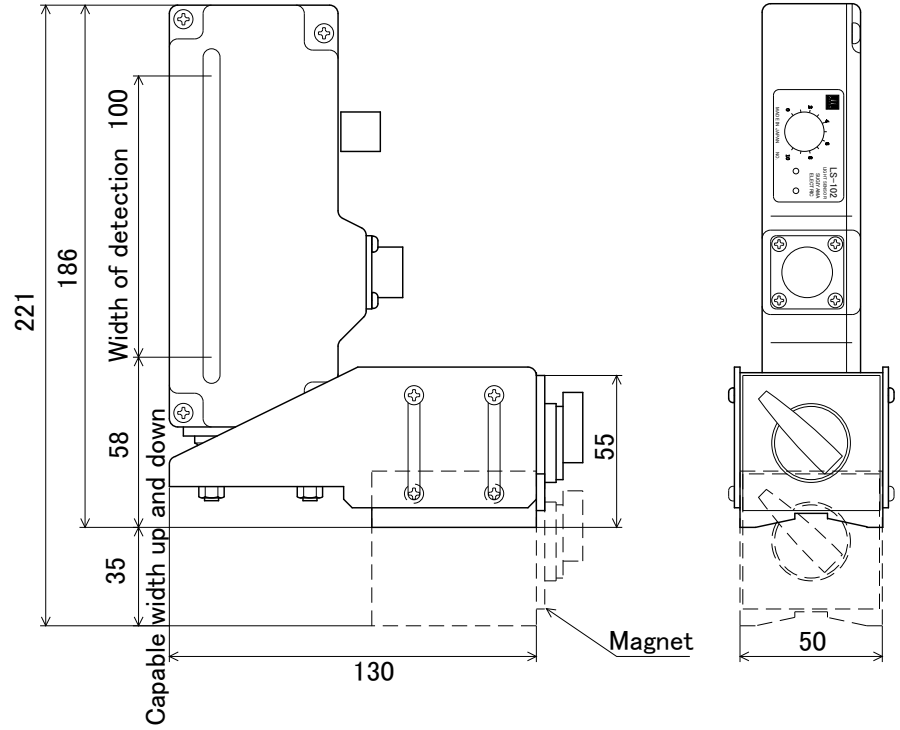
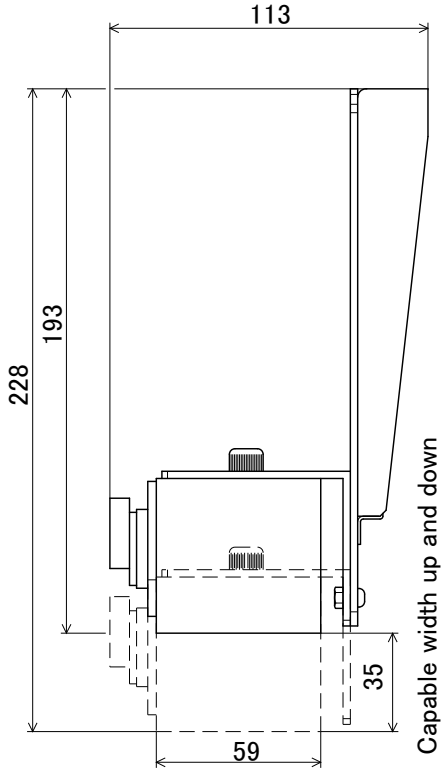


LS-102

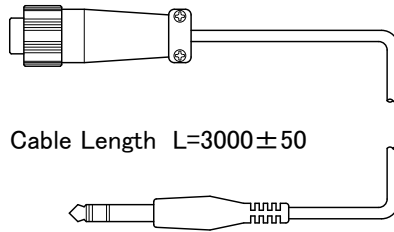


Reflector for LS-102M

LS-102M

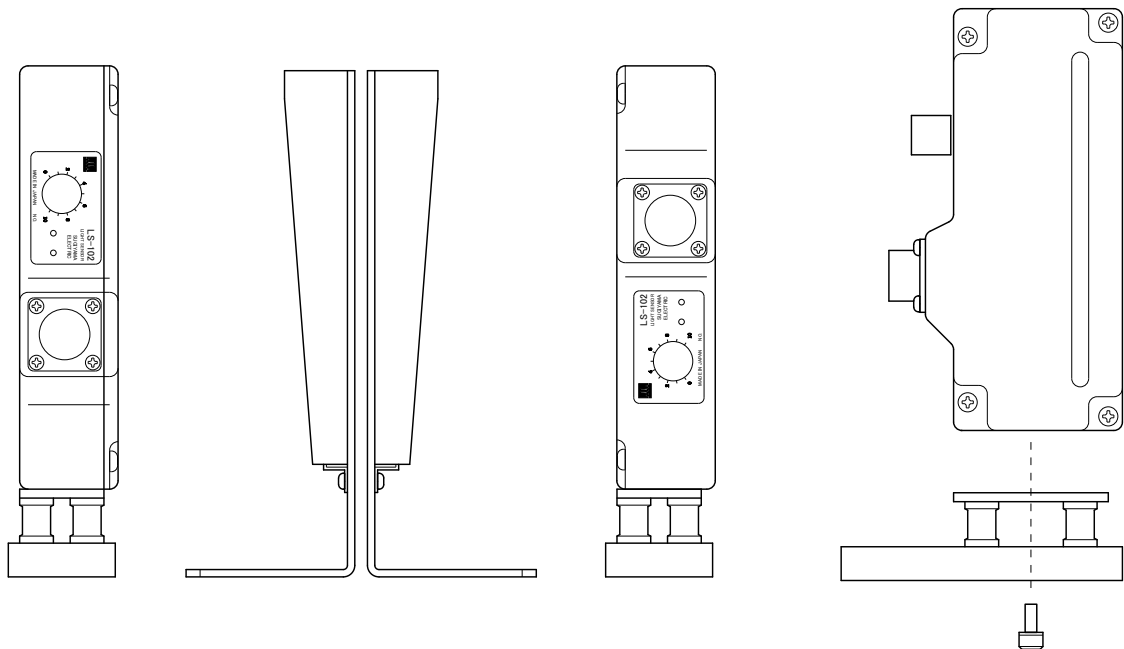


The sensor cable



Cable Length L=3000±50

LS-102 Usage example when two pieces are detected



Please detach the main body of the sensor and the bracket, and install it inverted.